



# **Puff Iron**

## **Model 'D'**

# **OWNER'S MANUAL**

**CISSELL MANUFACTURING COMPANY**

**HEADQUARTERS**

831 SOUTH FIRST ST.

P.O. BOX 32270

LOUISVILLE, KY 40232-2270

PHONE: (502) 587-1292

SALES FAX: (502) 585-3625

SERVICE/PARTS FAX: (502) 681-1275

**THIS MANUAL MUST BE GIVEN TO THE EQUIPMENT OWNER.**

**MAN 343 8/95**

Part No. D0132

## **WARRANTY**

The Cissell Manufacturing Company (Cissell) warrants all new equipment (and the original parts thereof) to be free from defects in material or workmanship for a period of one (1) year from the date of sale thereof to an original purchaser for use, except as hereinafter provided. With respect to non-durable parts normally requiring replacement in less than one (1) year due to normal wear and tear, including, but not limited to, cloth goods, valve discs, hoses, and iron cords, and with respect to all new repair or replacement parts for Cissell equipment for which the one (1) year warranty period has expired, or for all new repair or replacement parts for equipment other than Cissell equipment, the warranty period is limited to ninety (90) days from date of sale. The warranty period on each new replacement part furnished by Cissell in fulfillment of the warranty on new equipment or parts shall be for the unexpired portion of the original warranty period on the part replaced.

With respect to electric motors, coin meters and other accessories furnished with the new equipment, but not manufactured by Cissell, the warranty is limited to that provided by the respective manufacturer.

Cissell's total liability arising out of the manufacture and sale of new equipment and parts, whether under the warranty or caused by Cissell's negligence or otherwise, shall be limited to Cissell repairing or replacing, at its option, any defective equipment or part returned f.o.b. Cissell's factory, transportation prepaid, within the applicable warranty period and found by Cissell to have been defective, and in no event shall Cissell be liable for damages of any kind, whether for any injury to persons or property or for any special or consequential damages. The liability of Cissell does not include furnishing (or paying for) any labor such as that required to service, remove or install; to diagnose troubles; to adjust, remove or replace defective equipment or a part; nor does it include any responsibility for transportation expense which is involved therein.

The warranty of Cissell is contingent upon installation and use of its equipment under normal operating conditions. The warranty is void on equipment or parts; that have been subjected to misuse, accident, or negligent damage; operated under loads, pressures, speeds, electrical connections, plumbing, or conditions other than those specified by Cissell; operated or repaired with other than genuine Cissell replacement parts; damaged by fire, flood, vandalism, or such other causes beyond the control of Cissell; altered or repaired in any way that effects the reliability or detracts from its performance, or; which have had the identification plate, or serial number, altered, defaced, or removed.

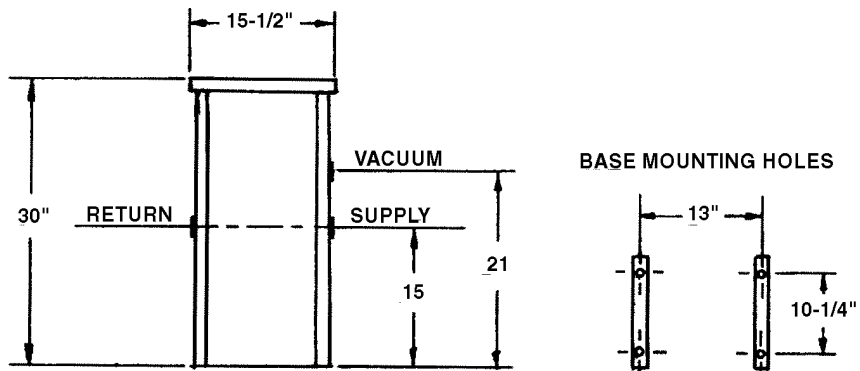
No defective equipment or part may be returned to Cissell for repair or replacement without prior written authorization from Cissell. Charges for unauthorized repairs will not be accepted or paid by Cissell.

CISSELL MAKES NO OTHER EXPRESS OR IMPLIED WARRANTY, STATUTORY OR OTHERWISE, CONCERNING THE EQUIPMENT OR PARTS INCLUDING, WITHOUT LIMITATION, A WARRANTY OF FITNESS FOR A PARTICULAR PURPOSE, OR A WARRANTY OF MERCHANTABILITY. THE WARRANTIES GIVEN ABOVE ARE EXPRESSLY IN LIEU OF ALL OTHER WARRANTIES, EXPRESS OR IMPLIED. CISSELL NEITHER ASSUMES, NOR AUTHORIZES ANY PERSON TO ASSUME FOR IT, ANY OTHER WARRANTY OR LIABILITY IN CONNECTION WITH THE MANUFACTURE, USE OR SALE OF ITS EQUIPMENT OR PARTS.

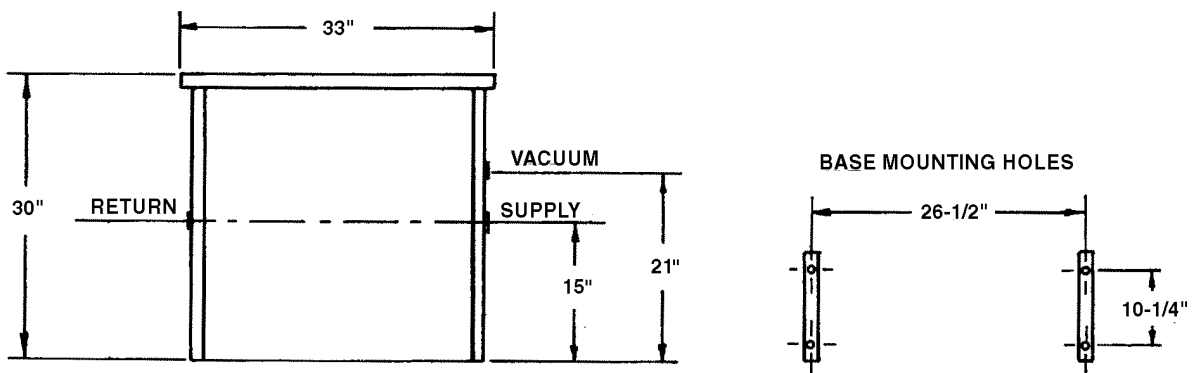
For warranty service, contact the Distributor from whom the Cissell equipment or part was purchased. If the Distributor cannot be reached, contact Cissell.

## DIMENSION DRAWINGS

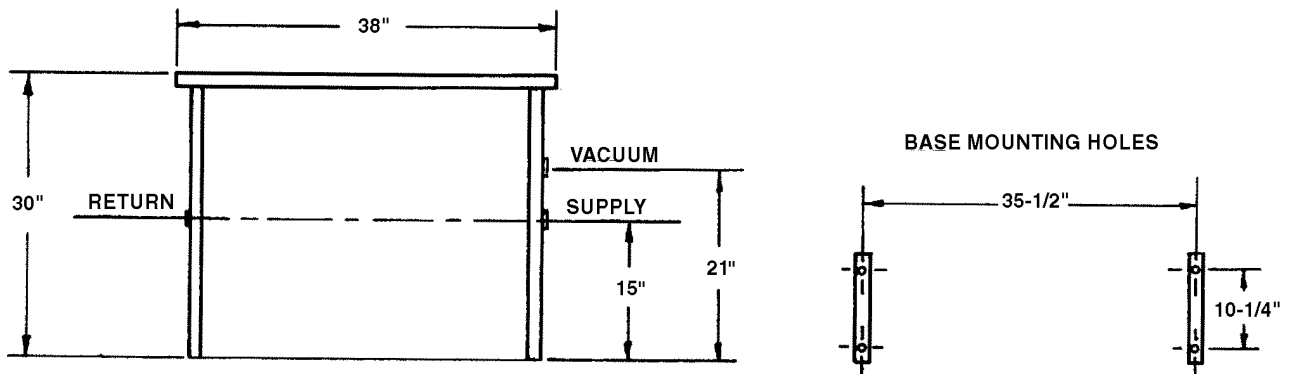
All dimensions are in inches  $\pm 1/4$ .



**15-1/2" SINGLE TABLE**



**33" DOUBLE TABLE**



**38" TRIPLE TABLE**

**INSTRUCTIONS FOR STEAM CONNECTIONS FOR PUFF IRONS**  
**IMPORTANT: INSTALL STEAM PIPING IN ACCORDANCE WITH**  
**ALL LOCAL REGULATIONS AND REQUIREMENTS.**

1. Set and anchor machine in position. Machine should be level to assure proper steam circulation.
2. To prevent condensate draining from headers to machine, piping should have a minimum riser 12" above each respective header as illustrated. Do not make steam connection to header with a horizontal or downwardly facing tee or elbow.
3. Whenever possible, horizontal runs of steam must drain, by gravity, to respective steam header. Water pocket or an improperly drained steam header will provide wet steam causing unnecessary wetting-out of head covers.
4. In both the steam supply and steam return line, it is recommended that each have a 1/2" union and 1/2" globe valve. This will enable you to disconnect the steam connections and block steam flow to and from machine while servicing machine.
5. Before installing trap and check valve in steam return line, open globe valve in steam supply line to allow steam to flow through machine to flush out any dirt and scale from machine. This will assure proper operation of trap when connected.
6. After flushing system, install bucket trap (with built-in strainer) and check valve as illustrated. For successful operation of machine, install trap as close to floor and as near to machine as possible. Inspect trap carefully for inlet and outlet marking and install according to manufacturer instructions.  
If steam is gravity-returned to boiler, omit trap but install check valve in return line near machine.
7. Install union and globe valve to return line and make final pipe connection to return header.

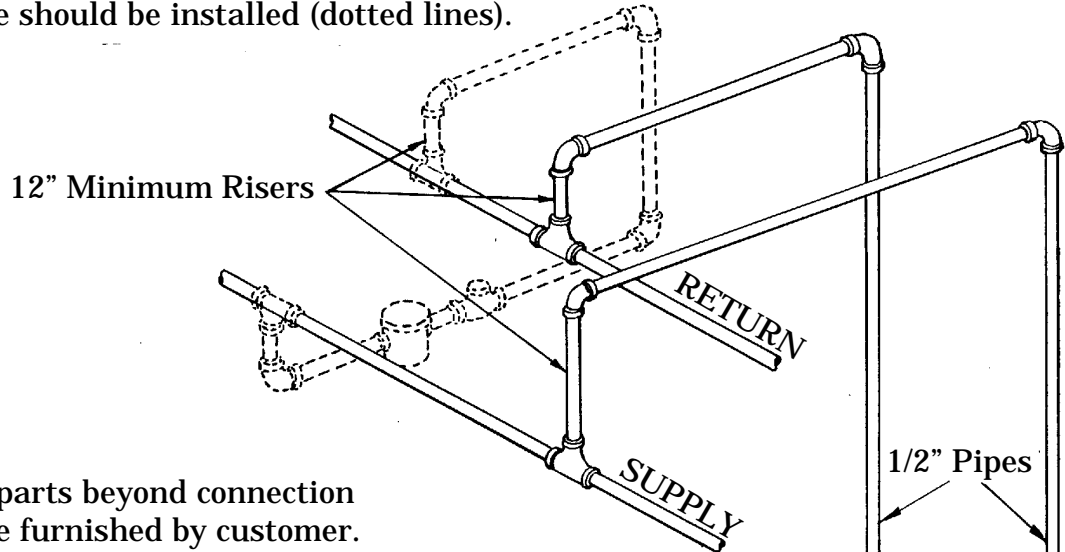
**CAUTION:** Before operating Puff Iron, open globe valves in steam lines and allow Puff Iron to warm up. Under no circumstances should machine be operated until hot.

**RECOMMENDATIONS**

1. Use a separate trap for each unit. Always keep the trap clean and in good working condition.
2. When machine is on the end of a line of equipment, extend headers at least 4 ft. beyond machine. Install globe valve, union, check valve trap and optional by-pass at the end of a line. If gravity return to boiler, omit trap.
3. Insulate steam supply and return line for safety of operator and safety while servicing machine.
4. Keep machine in good working condition. Repair or replace any worn or defective parts.

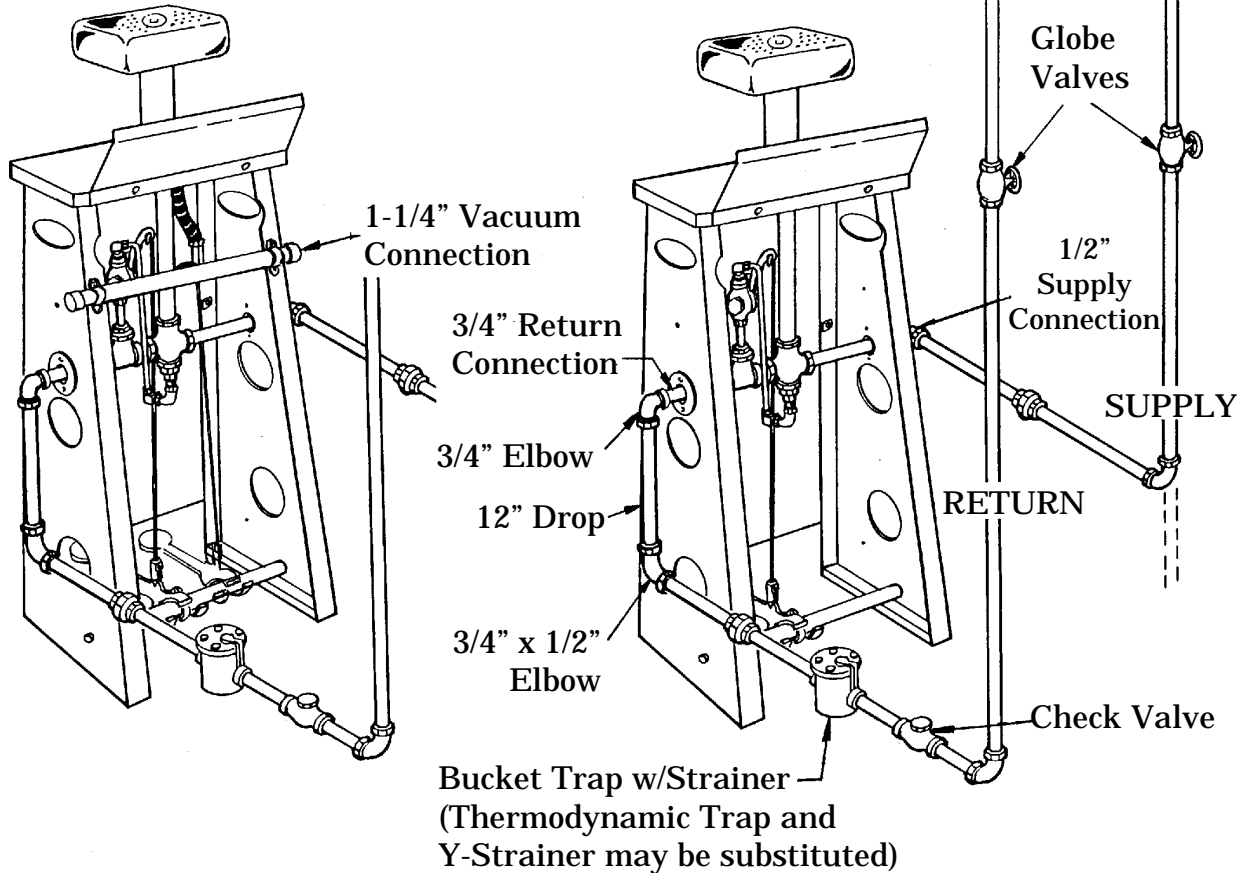
## **STEAM PIPING**

For wet line conditions, trap w/strainer and check valve should be installed (dotted lines).

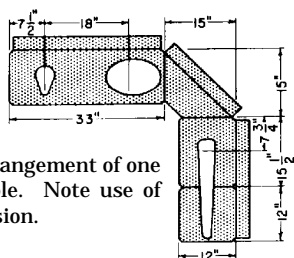
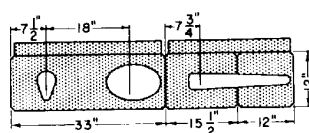


All piping parts beyond connection points to be furnished by customer.

## **CENTRAL AIR VACUUM**



## PUFF IRON TABLE ARRANGEMENTS



Drawings show in-line or angle arrangement of one Double Table and one Single Table. Note use of Angular Corner and Square Extension.

Note head centers on tables shown. Angular Corner and Back used for angle arrangement. Square Extension with bracket used with No. 4X, 4C or 4 Sleever for extra working space.

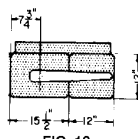


FIG. 13

### SINGLE TABLE

**One 15-1/2" SINGLE TABLE.**  
Unit includes No. 4C Sleever with 12" extension.

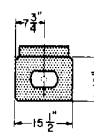
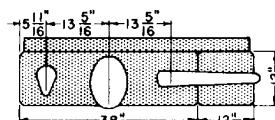


FIG. 14

### SINGLE TABLE

**One 15-1/2" SINGLE TABLE.**  
Unit includes No. 1M Men's Shoulder.



Drawing shows suggested heads on 38" Triple Table.

## PUFF IRON SPECIFICATIONS

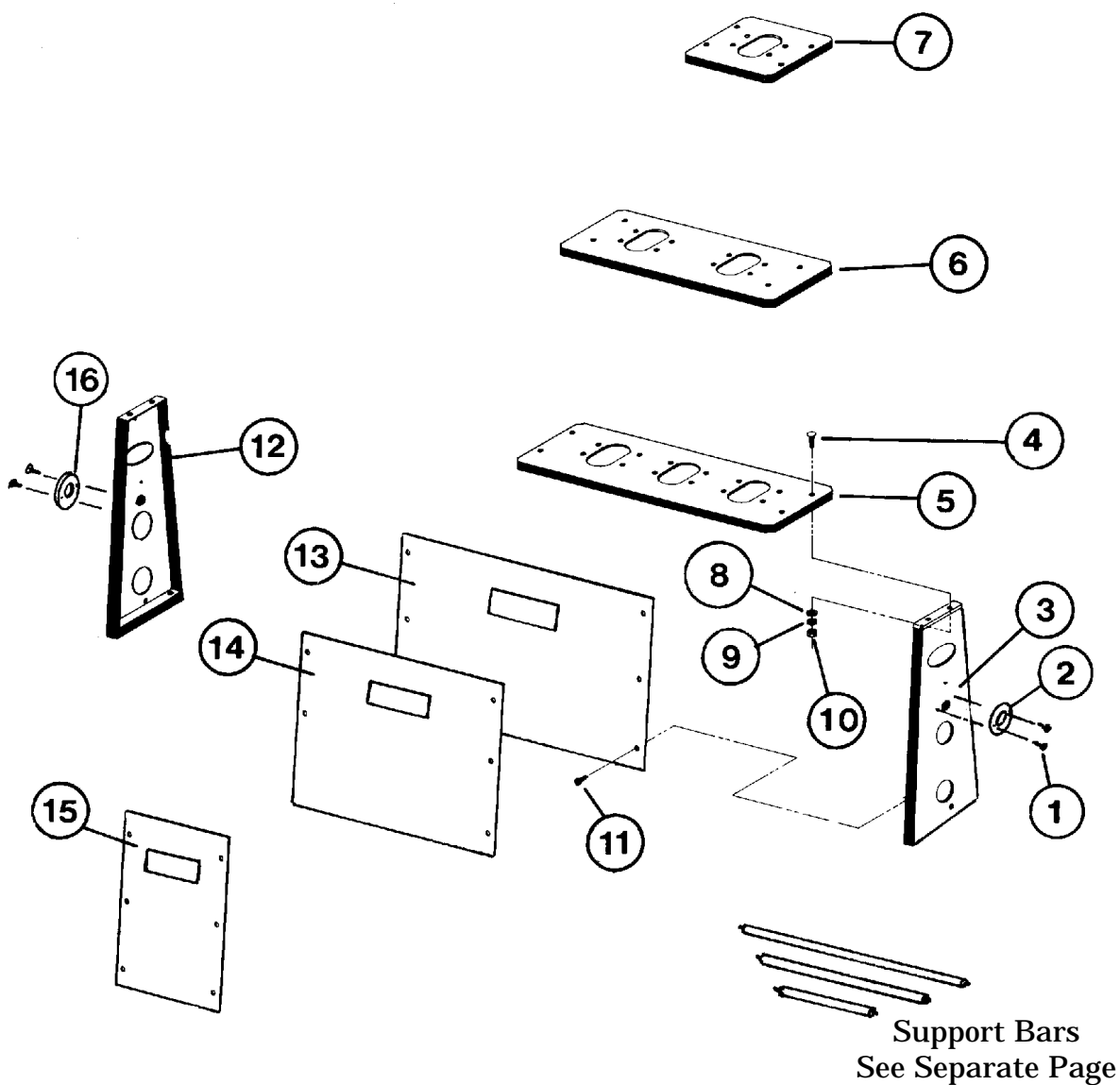
Steam Pressure .....	60-100 P.S.I.G. (4.14 - 6.9 Bars)
Steam Supply .....	1/2" Pipe Connection
Steam Return .....	3/4" Pipe Connection
Vacuum Connection .....	1-1/4" Connection
Vacuum Requirement .....	1/4" Press Capacity

### Boiler Horsepower

Single Puff Iron Table .....	1/8 H.P.
Double Puff Iron Table .....	1/4 H.P.
Triple Puff Iron Table .....	3/8 H.P.

## APPROXIMATE SHIPPING WEIGHTS

UNIT	DOMESTIC	EXPORT	EXPORT SHIPPING DIMENSIONS
<b>(with fabric pressing heads)</b>			
33" Double Table with 2 and 4-C with extension and bracket.	215 lbs. (97.5 kg.)	465 lbs. (210.9 kg.)	74" x 23" x 53" (188 cm x 58 cm x 135 cm) 52.2 cu. ft. (1.48 m <sup>3</sup> )
33" Double Table with 1-L, 2; 15-1/2" Single Table with 4-C with extension and bracket.	175 lbs. (79.4 kg.)	415 lbs. (188.2 kg.)	66" x 23" x 51" (168 cm x 58 cm x 130 cm) 44.8 cu. ft. (1.27 m <sup>3</sup> )
15-1/2" Single Table with 1-M Shoulder	62 lbs. (28.1 kg.)	105 lbs. (47.6 kg.)	18" x 15" x 53" (46 cm x 38 x 135 cm) 8.3 cu. ft. (0.24 m <sup>3</sup> )
<b>(without fabric pressing heads)</b>			
33" Double Table with 2 and 4-C with extension and bracket.	195 lbs. (88.5 kg.)	445 lbs. (201.9 kg.)	74" x 18" x 50" (188 cm x 46 cm x 127 cm) 38.5 cu. ft. (1.09 m <sup>3</sup> )
38" Triple Table with 1-L, 2 4-C with extension and bracket.	125 lbs. (56.7 kg.)	275 lbs. (124.7 kg.)	41" x 29" x 47" (104 cm x 74 cm x 119 cm) 32.2 cu. ft. (0.91 m <sup>3</sup> )
15-1/2" Single Table with 1-M Shoulder	57 lbs. (25.9 kg.)	100 lbs. (45.7 kg.)	20" x 15" x 50" (51 cm x 38 cm x 127 cm) 8.7 cu. ft. (0.25 m <sup>3</sup> )

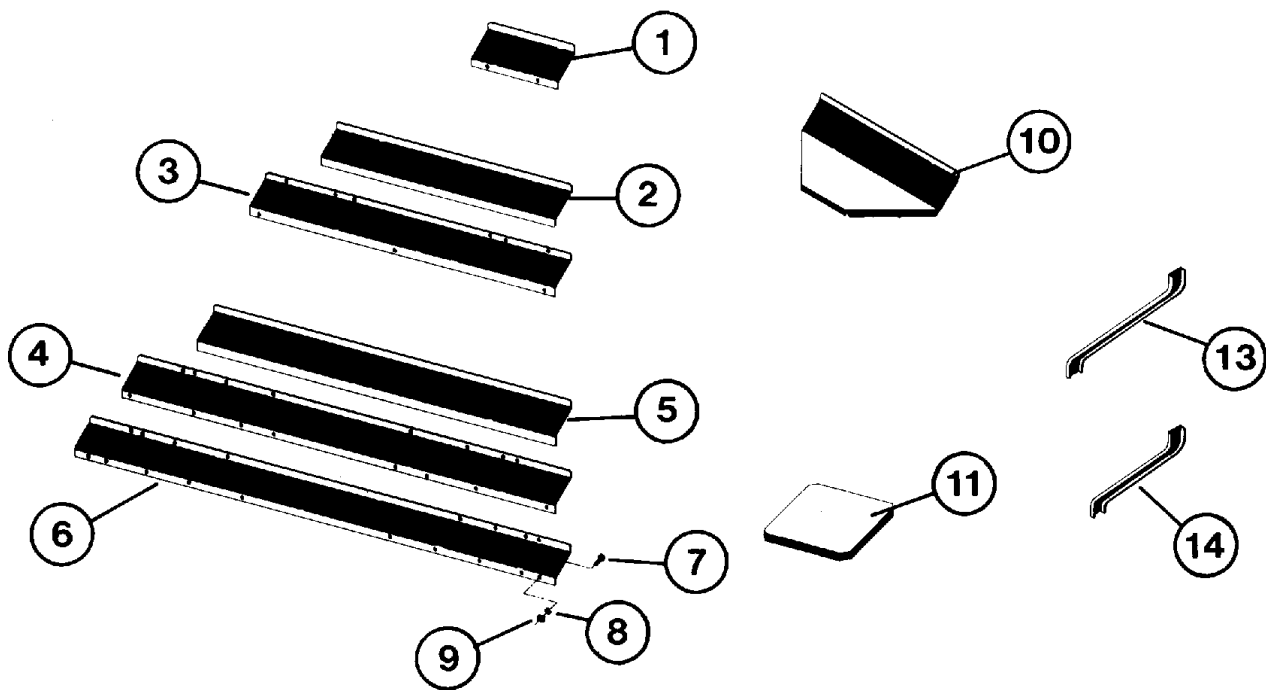


## **PUFF IRON "D" MODEL TABLE PARTS**

<b><u>Ref. No.</u></b>	<b><u>Part No.</u></b>	<b><u>Description</u></b>	<b><u>Ref. No.</u></b>	<b><u>Part No.</u></b>	<b><u>Description</u></b>
1	TU7733	#8 x 1/2" Self Drill Screw	9	TU2846	Lockwasher, 1/4"
		(Pkg. of 6)	10	TU4934	Hex Nut, 1/4" - 20
2	F225	Spacer Ring (Return)	11	P509	Phillips Screw, 1/4" -
3	P454	Right Table Leg			20 x 5/8"
4	P219	Truss Hd. Bolt, 1/4 -	12	P455	Left Table Leg
		20 x 1/2"	13	P513	Triple Front Panel Asm.*
5	P165	Triple Top - 38"	14	P512	Double Front Panel Asm.*
6	P153	Double Top - 33"	15	P511	Single Front Panel Asm.*
7	P154	Single Top - 15-1/2"	16	P528	Spacer Ring (Supply)
8	TU2847	Cut Washer, 1/4"			

\* Consists of Front Panel, Cissell Namplate, screws and washers.

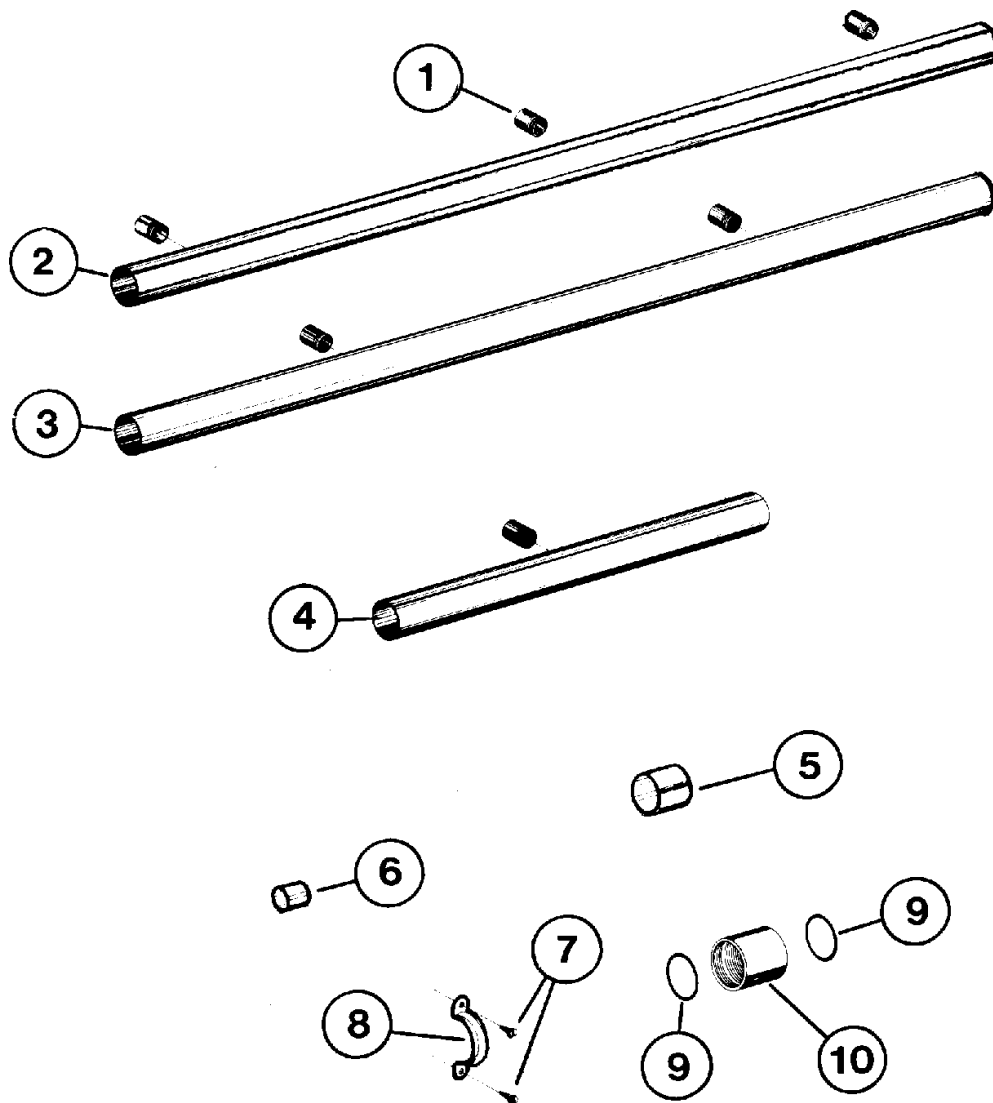
NOTE: For service, new design allows easy access from front of machine by removing front panel screws and washers. Nuts are welded to table legs.



### **TABLE BACKS, CORNER, EXTENSION & BRACES**

<b><u>Ref. No.</u></b>	<b><u>Part No.</u></b>	<b><u>Description</u></b>	<b><u>Ref. No.</u></b>	<b><u>Part No.</u></b>	<b><u>Description</u></b>
1	P155	Back, Single Table	11	P156	12" x 12" Extension
2	P158	Back, Single w/Extension		P505	Extension w/Brace & Hardware for Single or Triple
3	P159	Back, Double Table		P507	Extension w/Brace & Hardware for Double
4	P167	Back, Triple Table			Extension Brace for Single & Triple
5	P161	Back, Double w/Extension	13	P483	Extension Brace for Double Table
6	P166	Back, Triple w/Extension			
7	P219	Tr. Hd. Scw. 1/4"-20 x 1/2"	14	P484	Extension Brace for Double Table
8	TU2846	Lockwasher, 1/4"			
9	TU4934	Hex Nut, 1/4-20			
10	P189	17" Corner and Back			

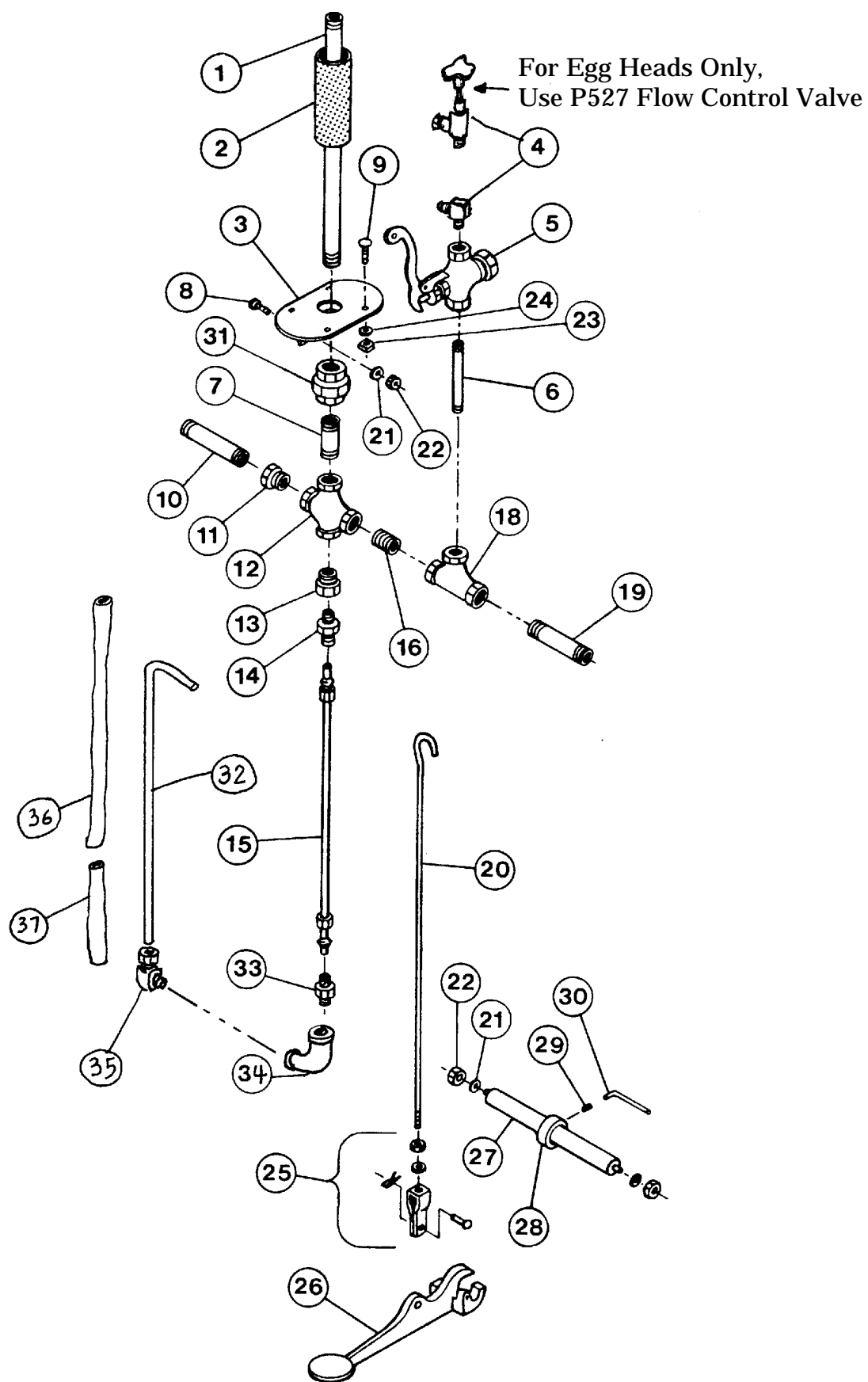




## **VACUUM MANIFOLD PARTS**

<b><u>Ref. No.</u></b>	<b><u>Part No.</u></b>	<b><u>Description</u></b>
1	P252	Hose Adapter
2	P523	Vacuum Manifold, Triple Table*
3	P257	Vacuum Manifold, Double Table*
4	P284	Vacuum Manifold, Single Table*
5	P253	Manifold Cap, 1-1/2"
6	P271	Adapter Cap, 3/4"
7	M263	#8 - 3/8" S.M.S.
8	P256	Pipe Clamp
9	P276	"O" Ring
10	P277	Union w/"O" Ring

\* Includes Hose Adapter(s)



## **SINGLE TABLE - VALVES AND RELATED PARTS**

### **Puff Iron "D" Models without Vacuum**

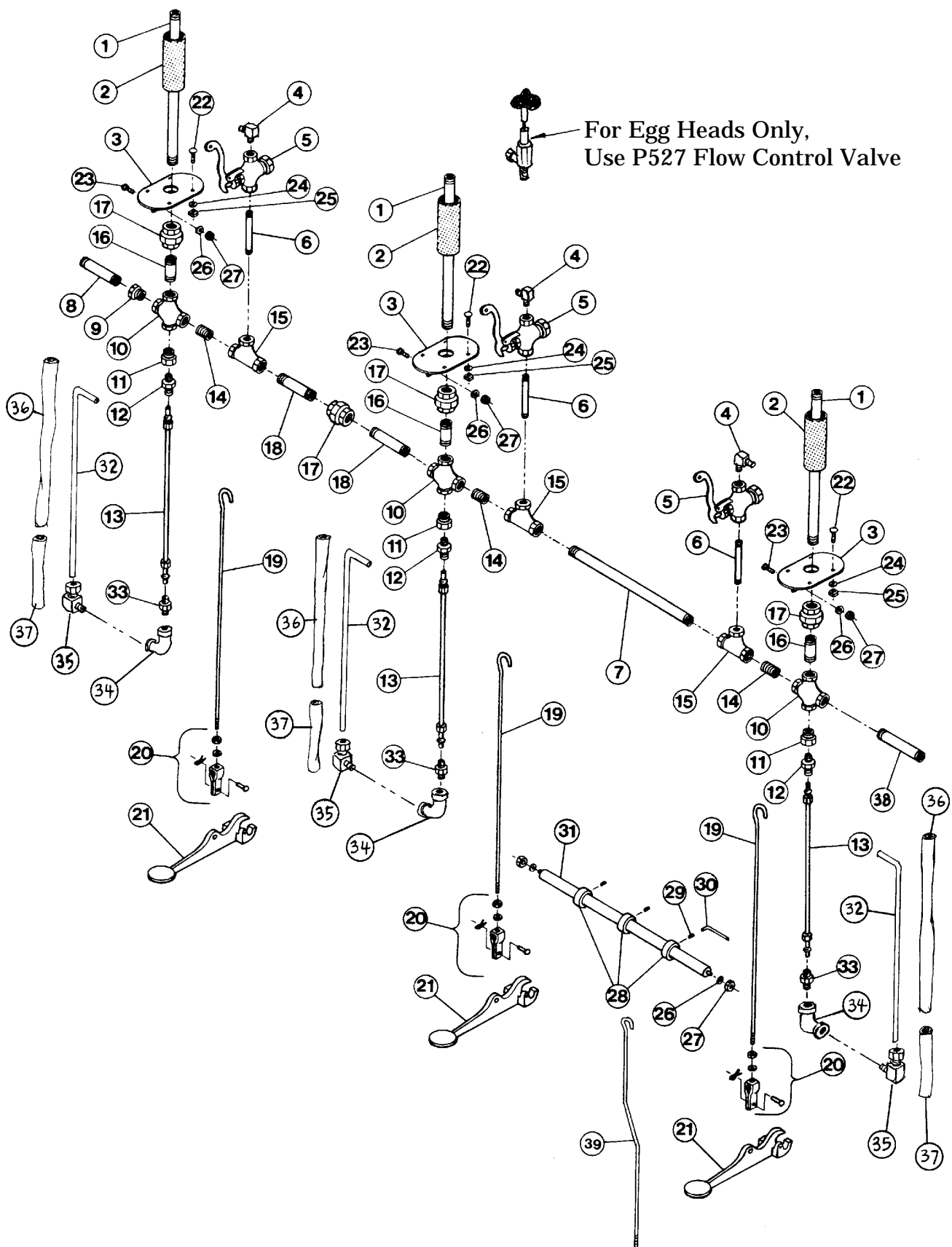
<b><u>Ref. No.</u></b>	<b><u>Part No.</u></b>	<b><u>Description</u></b>
1	TU4599	Steam Pipe, 3/4" x 18"
2	P262	Jacket
3	P266	Flange
4	P466	90° Fitting, 3/8"P x 1/4"T
5	P470	Disc Valve Assembly
	P504	Renewable Disc
	P506	Packing
6	390401246	Nipple, 3/8" x 3-1/2"
7	TU4607	Nipple, 3/4" x 2-1/2"
8	P273	Carriage Bolt, 5/16" - 18 x 3/4"
9	M280	Carriage Bolt, 1/4" - 20 x 1"
10	390401013	Nipple, 1/2" x 7"
11	OP267	Bushing, 3/4" x 1/2"
12	P459	Cross, 3/4"
13	P460	Bushing, 3/4" x 1/4"
14	P461	Fitting, St. 1/4"P x 1/4"T
15	P519	Straight Upsteam Tube Assembly
16	390401031	Nipple, 3/4" x Close
17	OP267	Bushing, 3/4" x 1/2"
18	P115	Tee, 3/4" x 3/4" x 3/8"
19	TU4598	Nipple, 3/4" x 6"
20	P465	Valve Rod
21	TU2814	Lockwasher, 5/16"
22	C249	Hex Nut, 5/16 - 18
23	TU4934	Hex Nut, 1/4 - 20
24	TU2846	Lockwasher, 1/4"
25	SF49	Yoke Assembly
26	P228	Foot Pedal
27	P132	Support Bar
28	P98	Collar
29	P126	Set Screw, 1/4" - 20
30	P36	Pedal Wrench
31	TU4600	Union, 3/4"
32	P525	"L" Shaped Tube
33	OP297	Straight Connector, 1/8"P x 1/4"T
34	OP268	Reducing El, 1/4"P x 1/8"P
35	P524	90° Connector, 1/4"P x 1/4"T
36	P526	Insulation
37	P529	Insulation



## **DOUBLE TABLE - VALVES AND RELATED PARTS**

Puff Iron "D" Models without Vacuum

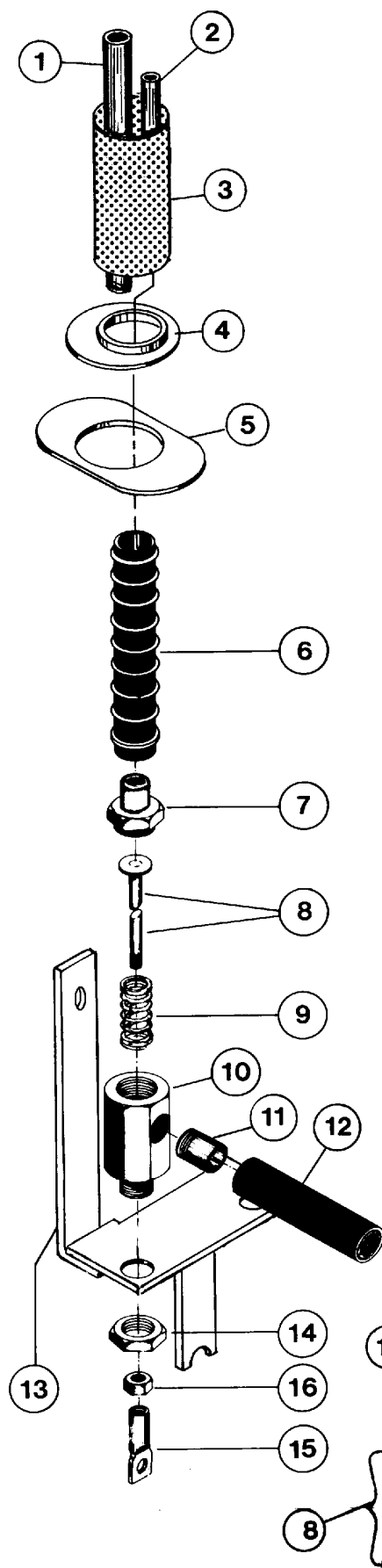
<b><u>Ref. No.</u></b>	<b><u>Part No.</u></b>	<b><u>Description</u></b>
1	P266	Flange
2	OP296	Nipple, 1/2" x 5"
3	TU4599	Steam Pipe, 3/4" x 18"
4	P262	Jacket
5	P466	90° Fitting, 3/8"P x 1/4"T
6	P470	Disc Valve Assembly
	P504	Renewable Disc
	P506	Packing
7	390401246	Nipple, 3/8" x 3-1/2"
8	TU4607	Nipple, 3/4" x 2-1/2"
9	OP267	Bushing, 3/4" x 1/2"
10	P459	Cross, 3/4"
11	P460	Bushing, 3/4" x 1/4"
12	P461	Fitting, 1/4"P x 1/4"T
13	390401031	Nipple, 3/4" x Close
14	P115	Tee, 3/4" x 3/4" x 3/8"
15	TU4610	Nipple, 3/4" x 5"
16	TU4600	Union, 3/4"
17	P273	Carriage Bolt, 5/16" - 18 x 3/4"
18	M280	Carriage Bolt, 1/4" - 20 x 1"
19	P266	Flange
20	TU2846	Lockwasher, 1/4"
21	TU4934	Hex Nut, 1/4" - 20
22	TU2814	Lockwasher, 5/16"
23	C249	Hex Nut, 1/4" - 20
24	P519	Straight Upsteam Tube Assembly
25	P465	Valve Rod
26	SF49	Yoke Assembly
27	P228	Foot Pedal
28	P177	Support Bar
29	P98	Collar
30	P126	Set Screw, 1/4" - 20
31	P36	Pedal Wrench
32	P525	"L" Shaped Tube
33	OP297	Straight Connector, 1/8"P x 1/4"T
34	OP268	Reducing El, 1/4"P x 1/8"P
35	P524	90° Connector, 1/4"P x 1/4"T
36	P526	Insulation
37	P529	Insulation
38	TU4598	Nipple, 3/4" x 6"
39	P532	Steam Valve Rod - Used on Vacuum Models Only for Right Side Head



# TRIPLE TABLE - VALVES AND RELATED PARTS

Puff Iron "D" Models without Vacuum

<b><u>Ref. No.</u></b>	<b><u>Part No.</u></b>	<b><u>Description</u></b>
1	TU4599	Steam Pipe, 3/4" x 18"
2	P262	Jacket
3	P266	Flange
4	P466	90° Fitting, 3/8"P x 1/4"T
5	P470	Disc Valve Assembly
	P506	Packing
	P504	Renewable Disc
6	390401246	Nipple, 3/8" x 3-1/2"
7	TU2862	Nipple, 3/4" x 6-1/2"
8	TU4651	Nipple, 1/2" x 6"
9	OP267	Bushing, 3/4" x 1/2"
10	P459	Cross, 3/4"
11	P460	Bushing, 3/4" x 1/4"
12	P461	Fitting, 1/4"P x 1/4"T
13	P519	Straight Upsteam Tube Assembly
14	390401031	Nipple, 3/4" x Close
15	P115	Tee, 3/4" x 3/4" x 3/8"
16	TU4607	Nipple, 3/4" x 2-1/2"
17	TU4600	Union, 3/4"
18	TU4608	Nipple, 3/4" x 2"
19	P465	Valve Rod
20	SF49	Yoke Assembly
21	P228	Foot Pedal
22	M280	Carriage Bolt, 1/4" - 20 x 1"
23	P273	Carriage Bolt, 5/16" - 18 x 3/4"
24	TU2846	Lockwasher, 5/16"
25	TU4934	Hex Nut, 1/4" - 20
26	TU2814	Lockwasher, 5/16"
27	C249	Hex Nut, 5/16" - 18
28	P98	Collar
29	P126	Set Screw, 1/4" - 20
30	P36	Pedal Wrench
31	P133	Support Bar
32	P525	"L" Shaped Tube
33	OP297	Straight Connector, 1/8"P x 1/4"T
34	OP268	Reducing El, 1/4"P x 1/8"P
35	P524	90° Connector, 1/4"P x 1/4"T
36	P526	Insulation
37	P529	Insulation
38	TU4598	Nipple, 3/4" x 6"
39	P532	Steam Valve Rod - Used on Vacuum Models Only for Right Side Head

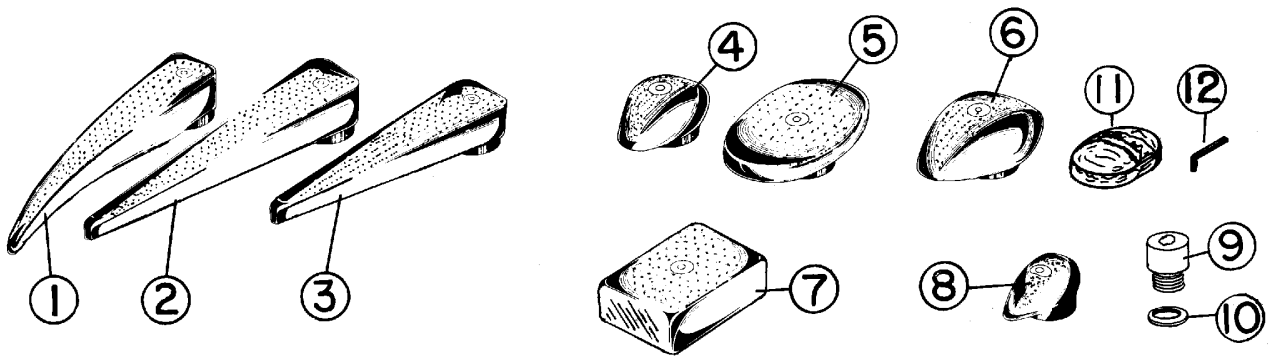


## **CENTRAL AIR VACUUM PARTS**

P503 - Vacuum Valve Assembly consists of parts 6 - 16

<b>Ref. No.</b>	<b>Part No.</b>	<b>Description</b>
1	TU4599	Steam Pipe
2	P260	Vacuum Pipe 3/8" x 7-1/2"
3	P298	Jacket
4	P299	Flange Adapter
5	P267	Flange
6	P301	Vacuum Tube w/Spring
7	P226	Valve Seat
8	P246	Valve Seal w/Stem
9	P244	Spring
10	P223	Valve Body
11	P252	Hose Adapter
12	P502	Rubber Tube - 7-7/8"
13	P501	Valve Bracket
14	OP547	Lock Nut, 3/4" - 16
15	P237	Pivot
16	V15	Small Lock Nut
17	FB298	Vacuum Pedal Rod
18	SF49	Yoke Assembly
19	P98	Collar
20	P228	Foot Pedal
21	P531	Vacuum Rod - Used for Right Side Head Only

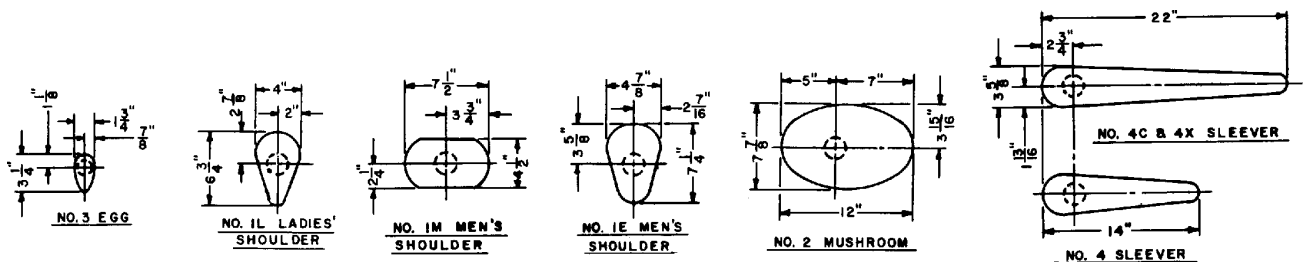


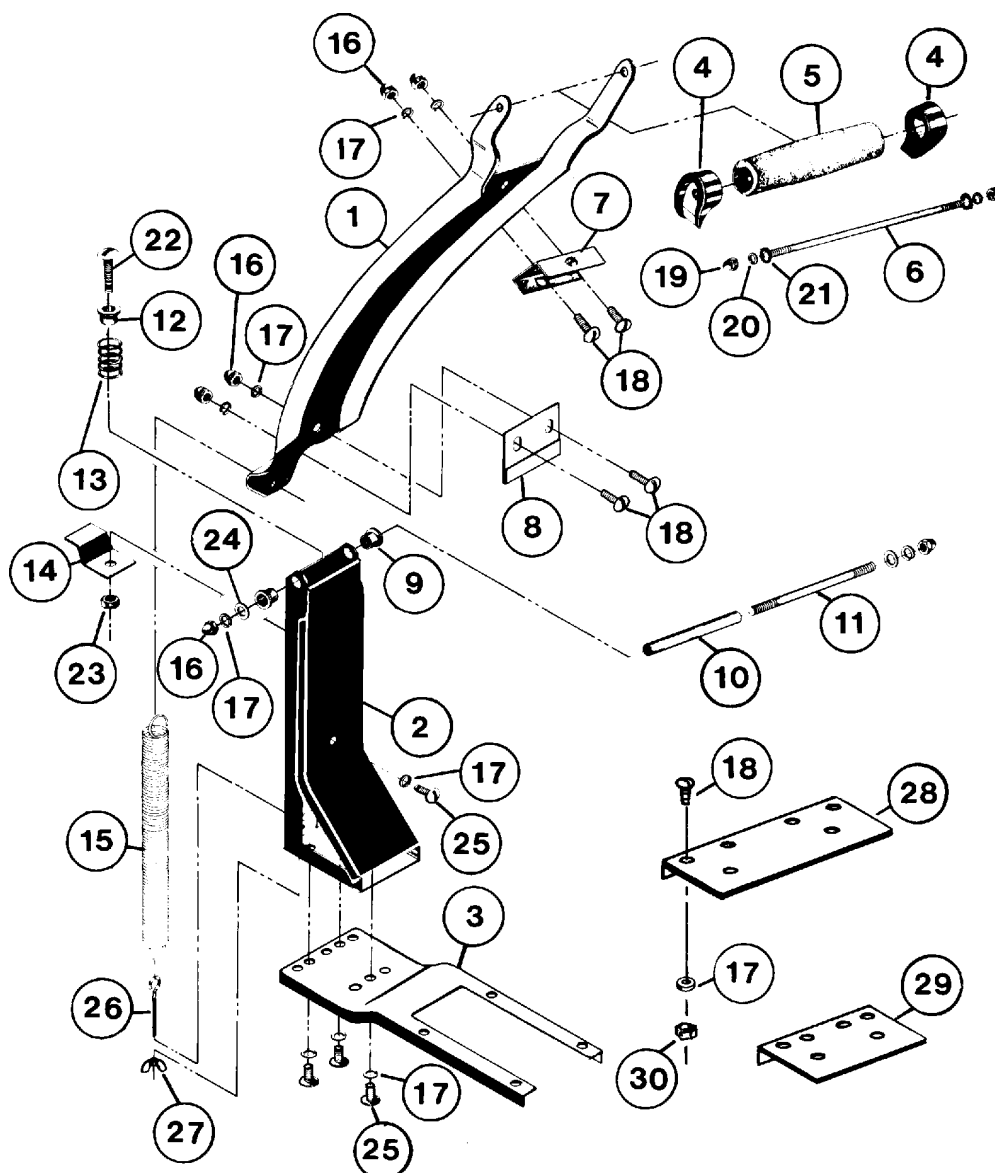


## HEAD ASSEMBLIES

Consists of Head, Steam Spreader and Gasket

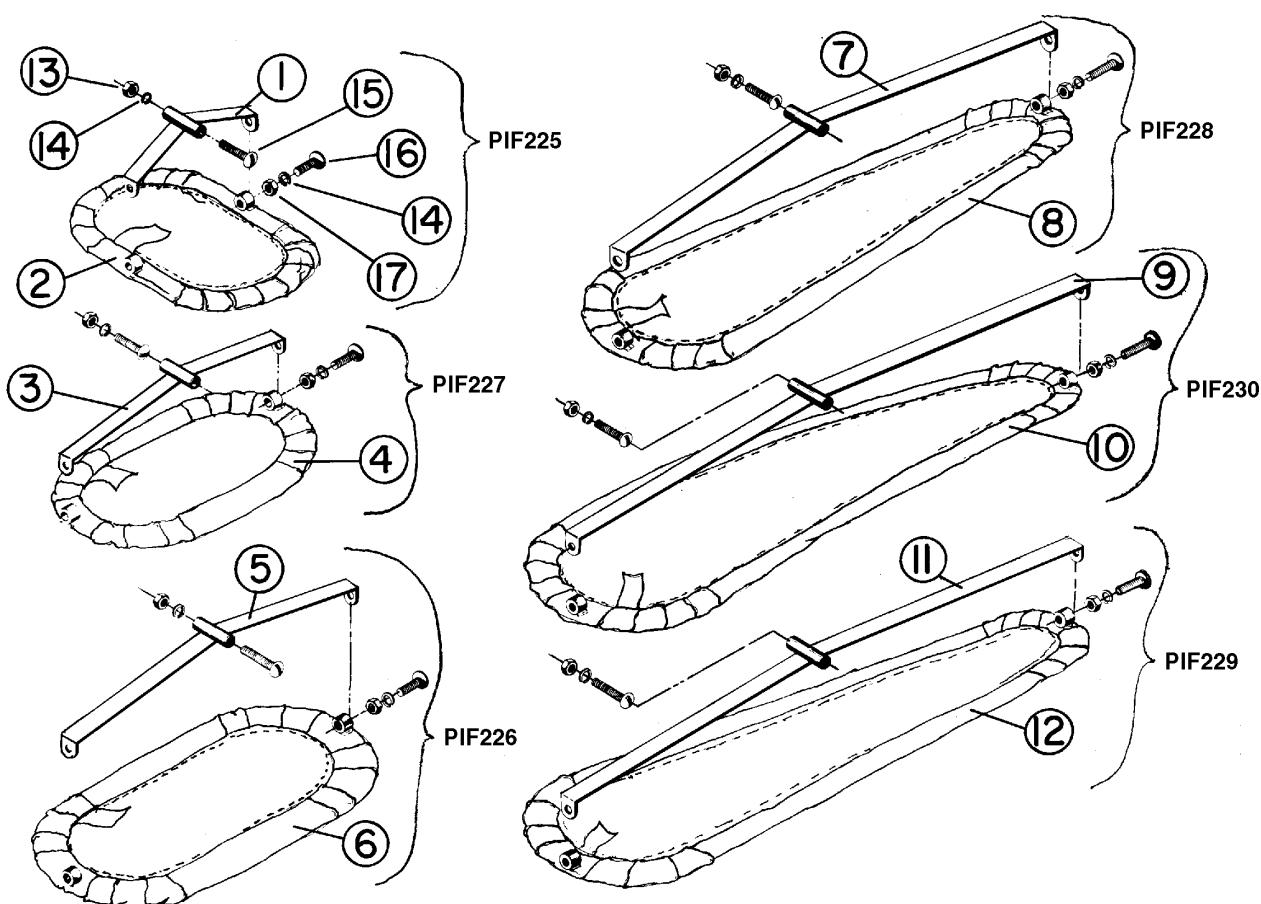
Ref. No.	Part No.			Description
	Regular	Vacuum	Nylon Cover & Flannel Pad	
1	P477	PV477	P146	No. 4C (22") Sleever Head
2	P476	PV476	P78	No. 4X (22") Sleever Head
3	P475	PV475	P77	No. 4 (14") Sleever Head
4	P471	PV471	P74	No. 1L Ladies Shoulder Head
5	P474	PV474	P75	No. 2 Mushroom Head
6	P472	PV472	P112	No. 1E Men's Shoulder Head
7	P473	PV473	P83	No. 1M Men's Shoulder Head
8	P479		P76	No. 3 Egg Head
9	P457			Steam Spreader (all except Egg)
	P458			Steam Spreader (Egg only)
10	P44			Copper Gasket
			P210	4-Way Set of Puff Iron Nylon Covers and Flannel Pads for 3, 1L, 2 and 4C Cissell Puff Iron Heads (Not Illustrated)
			P211	3-Way Set of Puff Iron Nylon Covers and Flannel Pads for 1L, 2 and 4C Cissell Puff Iron Heads (Not Illustrated)
11			P145	8-Inch Nylon Hand Pad (Optional)
12	P37			Head Seat Wrench, 5/16"





## **FABRIC PRESSING HEAD PARTS**

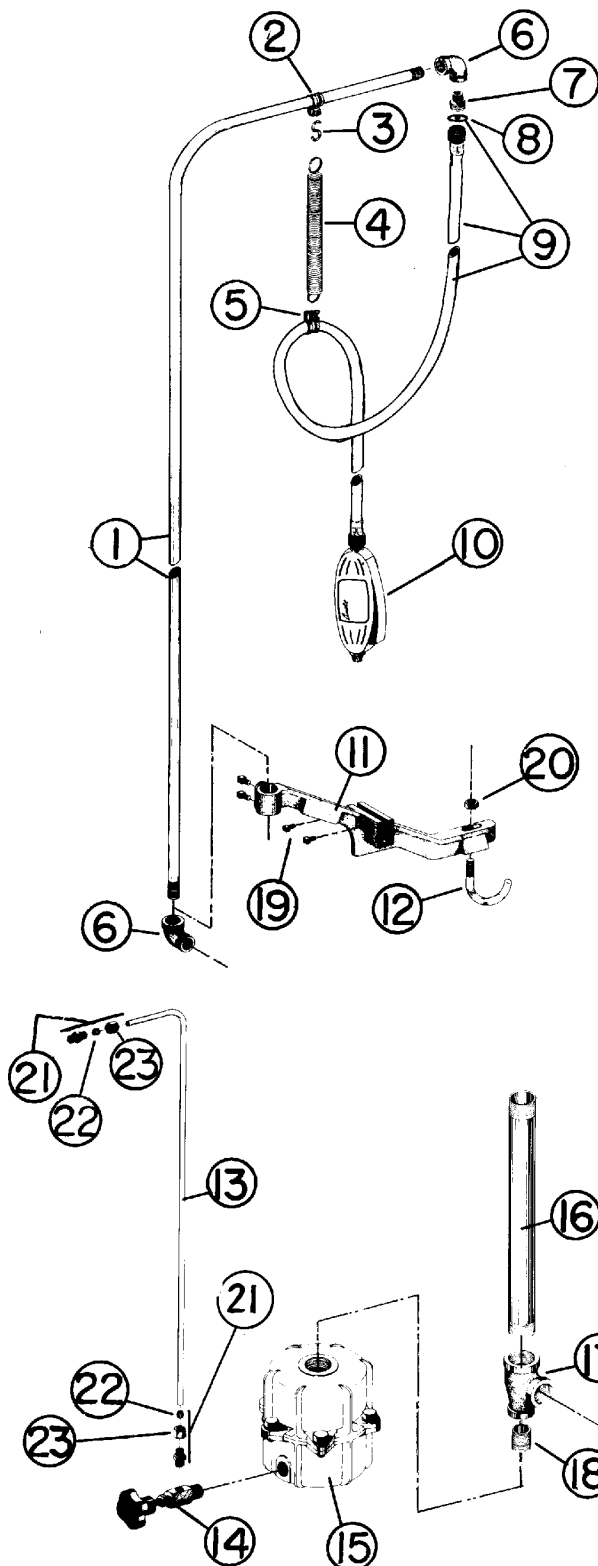
<b><u>Ref. No.</u></b>	<b><u>Part No.</u></b>	<b><u>Description</u></b>	<b><u>Ref. No.</u></b>	<b><u>Part No.</u></b>	<b><u>Description</u></b>
1	PIF163	Swinging Arm	16	C396	Crown Nut, 1/4" - 20
2	PIF162	Support Upright	17	TU2846	Lockwasher, 1/4"
3	PIF161	Support Base	18	P219	Tr. Hd. Scw., 1/4" - 20 x 1/2"
4	X54	Handle End	19	S20	#8 - 32 Crown Nut
5	X56	Cork Handle	20	AT368	Lockwasher, #8
6	S9	Handle Belt	21	TU4820	Cut Washer, #10
7	PIF169	Support Holder	22	RC355	Hex Cap Scw., 1/4" - 28 x 1 - 1/2"
8	PIF204	Stop	23	IB143	Hex Nut, 1/4" - 28
9	PIF172	Delrin Bushing	24	TU2847	Cut Washer, 1/4"
10	PIF164	Spacer	25	P302	Tr. Hd. Scw. 1/4" - 20 x 1"
11	PIF167	Pivot Stud	26	J10	Eye Bolt
12	V12	Gland	27	VSB154	Wing Nut, #10 - 24
13	V345	Spring	28	P163	Large Adapter, 4C or 4X
14	PIF202	Latch	29	P164	Small Adapter, 4 Sleever
15	PIF154	Extension Spring	30	TU4934	Hex Nut, 1/4" - 20



<u>Ref. No.</u>	<u>Part No.</u>	<u>Description</u>	<u>Ref. No.</u>	<u>Part No.</u>	<u>Description</u>
1	PIF155	Fabric Head Support Arm	9	PIF160	Fabric Head Support Arm
2	PIF148	Fabric Head Ring w/Screen and Cloth (For No. 1E Men's or No. 1 L Ladies Shoulder)	10	PIF153	Fabric Head Ring w/Screen and Cloth (For No. 4C (22") Sleever)
3	PIF157	Fabric Head Support Arm	11	PIF159	Fabric Head Support Arm
4	PIF152	Fabric Head Ring w/Screen and Cloth (For No. 1M Men's Shoulder)	12	PIF151	Fabric Head Ring w/Screen and Cloth (For No. 4X (22") Sleever)
5	PIF156	Fabric Head Support Arm	13	IB143	1/4" - 28 Hex. Hd. Nut
6	PIF149	Fabric Head Ring w/Screen and Cloth (For No. 2 Mushroom)	14	TU2846	1/4" Lockwasher
7	PIF158	Fabric Head Support Arm	15	FB190	1/4" - 28 x 2" Hex Head Scw.
8	PIF150	Fabric Head Ring w/Screen and Cloth (For #4 (14") Sleever)	16	P302	1/4" - 20 x 1" Truss Hd. Mach. Screw
			17	TU4934	1/4" - 20 Hex Nut

# **WATER SPRAY GUN AND CONDENSER ASSEMBLY**

P391



<b>Ref. No.</b>	<b>Part No.</b>	<b>Description</b>
1	SG89	1/4" L Shaped Pipe
2	OP329	Large Hose Clamp
3	J17	"S" Hook
4	SG38	Suspension Spring
5	GSB145	Small Hose Clamp
6	OP268	90° Reducing Pipe EL 1/4" x 1/8" (2 Req'd)
7	SGV35	Brass Adapter
8	SG25	Hose Gasket
9	SG37	5 Ft. Water Hose Assembly
10	SGO43	Overhead Water Spray Gun (See Separate Part Sheet)
11	SG49	Bracket for Water Spray Gun
12	SG50	"J" Bolt
13	SG90	1/4" Tubing 31" Long
14	SGV1	Valve (See Separate Part Sheet)
15	SGC2	Condenser (See Separate Part Sheet)
16	TU4604	3/4" x 9-3/4" Black Pipe
17	TU4595	3/4" x 1/2" x 3/4" Pipe Tee
18	TU2714	1/2" Close Nipple
19	J21	1/4" - 20 x 3/4" Sq. Hd. Set Screw
20	V56	5/16" - 20 Hex Nut
21	OP297	1/4" Tube x 1/8" Pipe Straight Connection w/Nut & Bead
22	PU8	1/4" Bead
23	SU65	1/4" Nut

## **SERVICE FOR PUFF IRON DISC VALVE**

CAUTION: When working on Puff Iron Disc Valve or Heads...

1. Turn off steam supply.
2. Depress foot pedal to release steam pressure and allow to cool.
3. Remove nylon covers from unpolished heads.

### **TO RESTART LEAKING DISC VALVE SEAT**

(Steam comes out of head)

- A. Rotate stem (1) with pliers. Be careful not to damage the end of stem.

### **TO REPACK OR CORRECT LEAKS AT PACK NUT**

(Water on the floor)

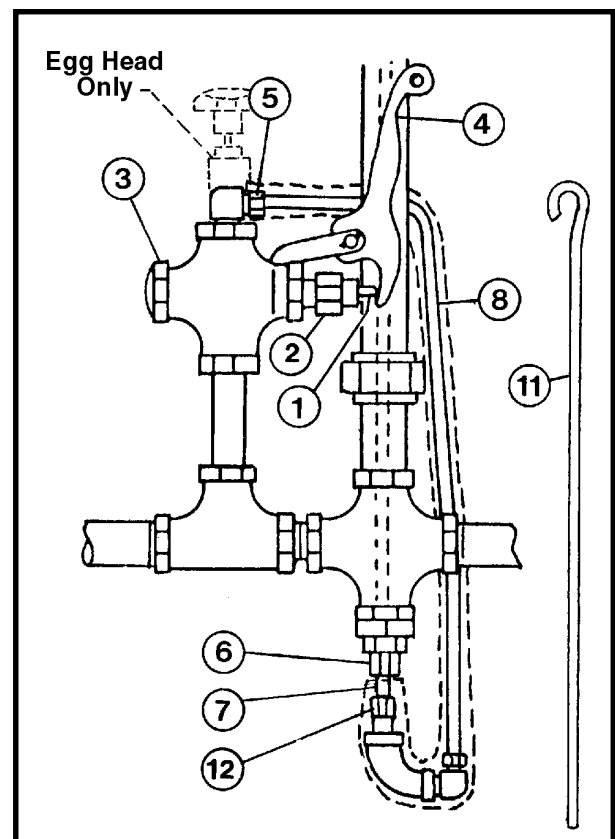
- A. For leaks, tighten the pack nut (2). Do not overtighten pack nut as this will cause packing to bind upon stem and hold valve open. If leak persists, replace packing.
- B. For repacking, disconnect foot pedal rod (11) from disc valve. Disconnect valve lever (4) from disc valve by removing cotter pin and stem. Unscrew large nut (3) which retains valve spring and valve seat. Push stem (1) out of valve. Remove old packing and replace with new packing. Re-assemble valve.

### **TO REPLACE DISC VALVE SEAT**

- A. Unscrew large nut (3) which retains valve spring and valve seat. Remove old seat and replace with a new seat assembly. Re-assemble valve.

### **TO REPLACE UPSTEAM TUBE ASSEMBLY**

- A. Unscrew nuts from fittings (12) & (5). Pull "L" tube (8) slowly to floor at fitting (12). Unscrew nut (6) from fitting. Unscrew tube (7) counter-clockwise from spreader in head. Remove tube.
- B. Replace with new upsteam tube in reverse order. Be sure to use pipe dope on threaded end of tube.



## TO REPLACE UPSTEAM SPREADER IN HEAD

- A. Insert 5/16" Allen wrench (8) into hex opening in spreader (9). Hit wrench with hammer (two or more very firm hits) to break corrosion bond between threads of brass spreader and aluminum head. Unscrew spreader (9) counter-clockwise and remove with old gasket (10). Hold upstream tube (7) at the same time to prevent damage.

NOTE: After removing old gasket, scrape and clean gasket seat in head with a small flat scraper before installing new gasket and spreader.

- B. Using pipe dope on all threads, screw in spreader and gasket being sure that the upstream tube enters the opening in the spreader as the spreader comes down into the head. Tighten the spreader securely with an Allen wrench.

NOTE: It may be necessary to remove the upstream tube to replace spreader.

- C. Turn on steam supply and check for leaks.

- D. After installing new steam spreader, file or grind extended part to match contour of the head. On polished heads, use "fine" emory cloth to remove sharp burrs and file marks. Polish if desired.

